

CABINETS FOR ACIDS AND ALKALIS

STORAGE SYSTEMS



CABINETS FOR ACIDS AND ALKALIS STORAGE SYSTEMS

TYPE: UNDER FUME CUPBOARD OR BENCH

Dividing spaces, integrating furniture, uniting people



DIMENSIONS

External:

W: 600/1100/1400 mm

D: 570+45/570+90 mm

H: 600+30 mm.

Internal:

A: 488/2 x 489

2 x 489 mm.

D: 530 mm.

H: 562 mm.

Weight

Total weight:

40/60/80 kg.



★ INTENDED USE

Special cabinet for safety and correct storage of aggressive liquids, in particular acids and alkalis (corrosive products) in working places. Not suitable for storing flammable products.

★ TECHNICAL CHARACTERISTICS STRUCTURE

High resistance to the corrosion and inner body made of special melamine panels hardened with high resistance. Exterior body made of melamine panels hardened with high resistance. Lock with an interchangeable cylinder lock.

★ REMOVABLE DRAWERS

Strong structure.

Optional internal configurations with removable sliding trays with collecting cuvette in demountable plastic.

Cabinet Width 590mm: 1/2 drawers.

Cabinet Width: 1100-1400 mm: 2/4 drawers

Load capacity: 25kg (uniformly distributed)/ cuvette

Cuvette: W x D x H (mm) 407 x 468 x 80.

★ VENTILATION

Ventilation channels and unique connection (Ø50 mm) in the wall which is behind of the cabine. Inhalation: 50 m³/h.

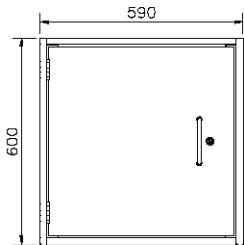
★ BASE SUPPORT

On base (Plasticized steel plate) height 30mm.

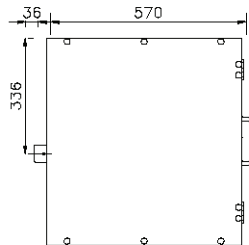
CABINETS FOR ACIDS AND ALKALIS / TYPE: UNDER FUME CUPBOARD OR BENCH

CABINETS FOR ACIDS AND ALKALIS STORAGE TYPE: UNDER FUME CUPBOARD OR BENCH SYSTEMS

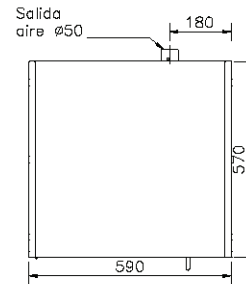
FRONT VIEW



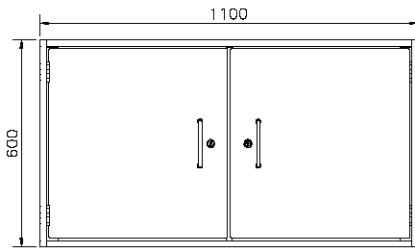
SIDE VIEW



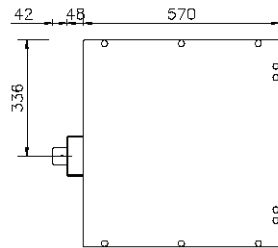
UPPER VIEW



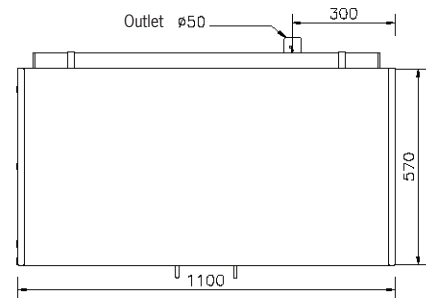
FRONT VIEW



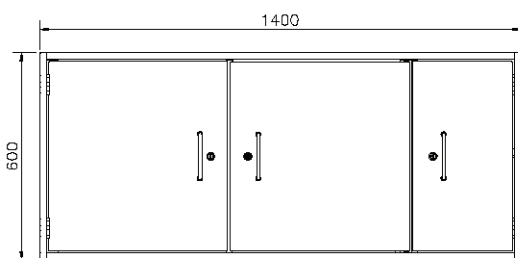
SIDE VIEW



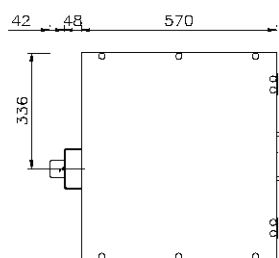
PLAN VIEW



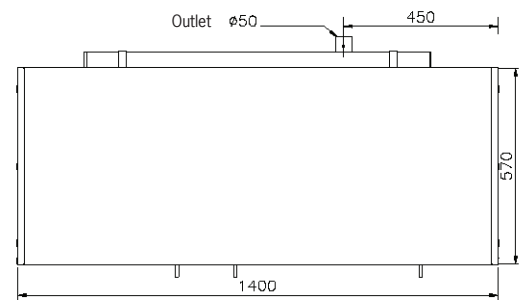
FRONT VIEW



SIDE VIEW



PLAN VIEW



Dividing spaces, integrating furniture, uniting people



DIMENSIONS

External
W: 600/1200 mm
D: 605 mm
H: 1970 mm

Internal
Total weight (without the interior equipment):
aprox. 125/160 kg.



* INTENDED USE

Special storage cabinet for secure and correct aggressive liquids storage, in particular acids and alkalis (corrosive products) in working places. Not suitable for storing flammable products.

* TECHNICAL CHARACTERISTICS STRUCTURE

Construction of double body with total interior ventilation. Metallic external body in steel plate with a thickness between 0,9-1,25 mm, plastic paint in powder RAL 7035 (light grey) of a minimum thickness of 60 µm coated. The Inner surfaces, material plastic coated with high resistance to chemical products, impacts and scratches.

4 leg support integrated in the cabinet's floor that facilitates the leveling. The locking and closing mechanisms are outside of the storage area in order to avoid its deterioration.

Lock with an interchangeable cylinder lock.

2 separated and isolated compartments from each other. For the model of 1200 mm the perimeter junctions are done in order to avoid the vapor exhaust.

* REMOVABLE DRAWERS

Robust construction

The extensible drawer includes a plastic, airtight and highly resistant removable cuvette

Cabinet Width 600mm: 6/4 drawers.

Cabinet Width 1200mm: 12/8 drawers

Load capacity: 25kg (uniformly distributed) Cuvette: W x D x H (mm)
407 x 468 x 80.

* VENTILATION

Ventilation channels and unique connection (Ø75 mm) in the ceiling part of the storage cabinet. Inhalation: 50 m³/h.

* SUPPORT BASE

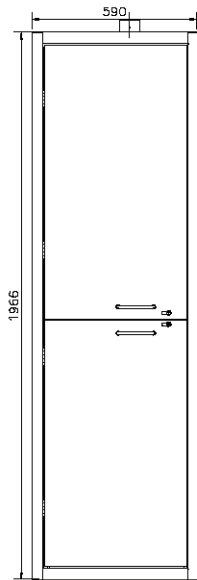
4 support legs integrated in the floor of the cabinet that facilitates the leveling.

CABINETS FOR ACIDS AND ALKALIS

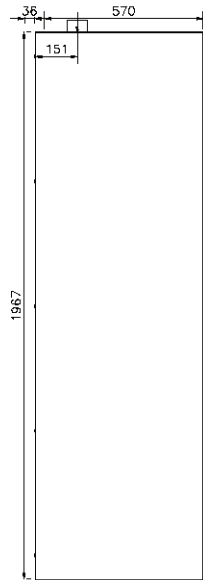
TYPE: HIGH FLOOR CABINET

STORAGE
SYSTEMS

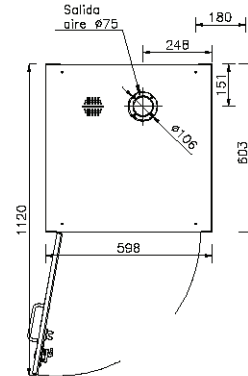
FRONT VIEW



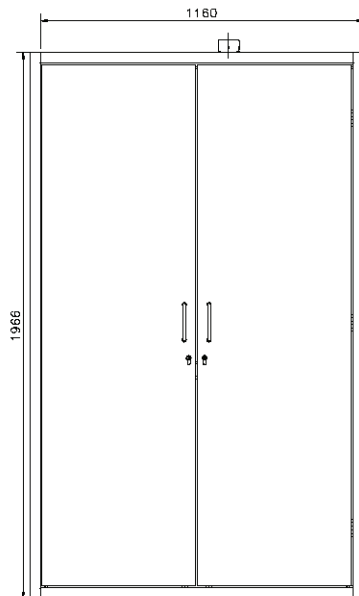
SIDE VIEW



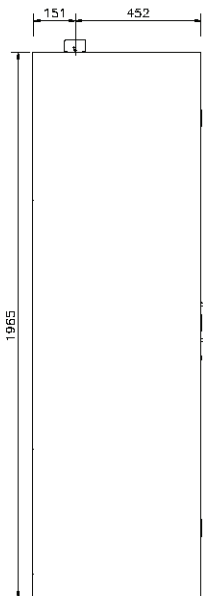
PLAN VIEW



FRONT VIEW



SIDE VIEW



UPPER VIEW

